

The Plan-Do-Check-Act Approach of your EnMS

Based on the Plan-Do-Check-Act continual improvement framework, ISO 50001 incorporates energy management into routine business practices described and depicted here:

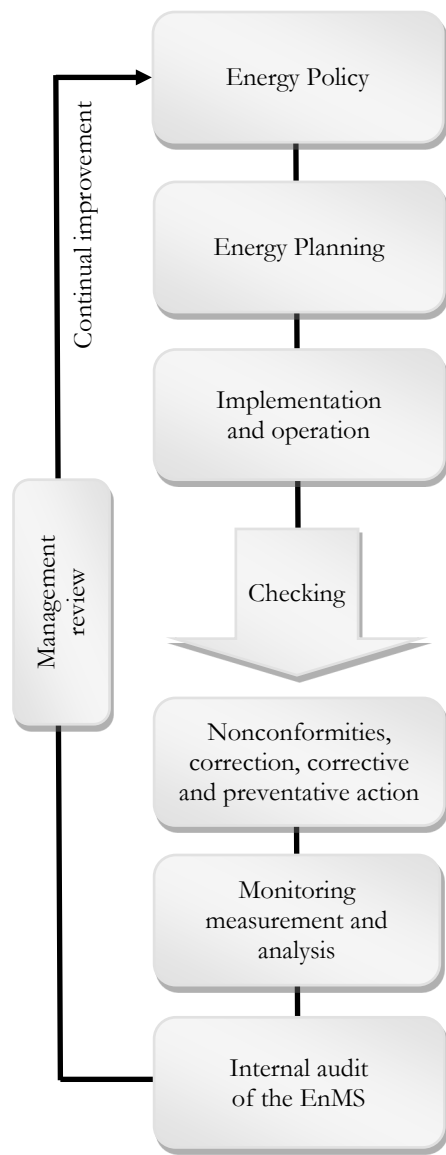
Plan: Perform an energy review to determine a baseline and energy performance indicators (EnPIs). Establish objectives, targets, and action plans that will result in opportunities to improve your organizations energy performance and energy policy.

Do: Implement and operate your EnMS action plans.

Check: Analyze measurements of the processes and characteristics of your EnMS that determine energy performance to that of your energy policy and objectives. Report the results.

Act: Be proactive in continually improving energy performance and your Energy Management System.

Energy Management Model



SRI is a Full-Service, Accredited Registrar

As acceptance of international standards has grown, so has SRI. Established in 1991, **SRI was one of the first five registrars in the U.S.** SRI now serves over 40 manufacturing and services industries across North America, Asia, and Europe.

SRI Auditors Make the Difference

From its leadership role, SRI has built its business by employing the best auditors in the field. Our senior auditors are seasoned professionals averaging more than 25 years of experience. They know the standards and the industry so they can step right in and add value to your audit.

We know you have a choice.

Here's why you should choose SRI:

- Accredited by ANAB, RvA, IATF, SRI offers registration to a **full range of standards** to meet all your business needs
- SRI's **web-based e-VENTS** system, integrated with our fully automated operation support, puts all your sites' audit schedules, plans, and results at your fingertips when you need it, where you need it
- SRI uses the **same audit team across audit events** for greater consistency and effectiveness
- SRI's **no-surprises, practical, open-book approach** builds strong, long-lasting relationships
- We are one of the **top five U.S. owned and operated** registrars, and among the first to be QS-9000 and ISO/TS 16949 qualified. Decisions regarding your business and registration are made right here by us
- **SRI's membership** in key QMS and EMS technical advisory groups, and participation in industry standards development and oversight, ensure you are among the first to know about changes that will affect your business
- **Training** conducted publicly by our lead auditors on standards and requirements gives you the practical, hands-on knowledge you need to succeed
- **Our organization is the right size** to provide responsive, one-on-one service to every client. We are ready when you need us



Quality • Environmental • Health & Safety
Responsible Care

Pittsburgh Headquarters
300 Northpointe Circle
Suite 304 - Seven Fields, PA 16046

TEL 724.934.9000
www.SRIRegistrar.com